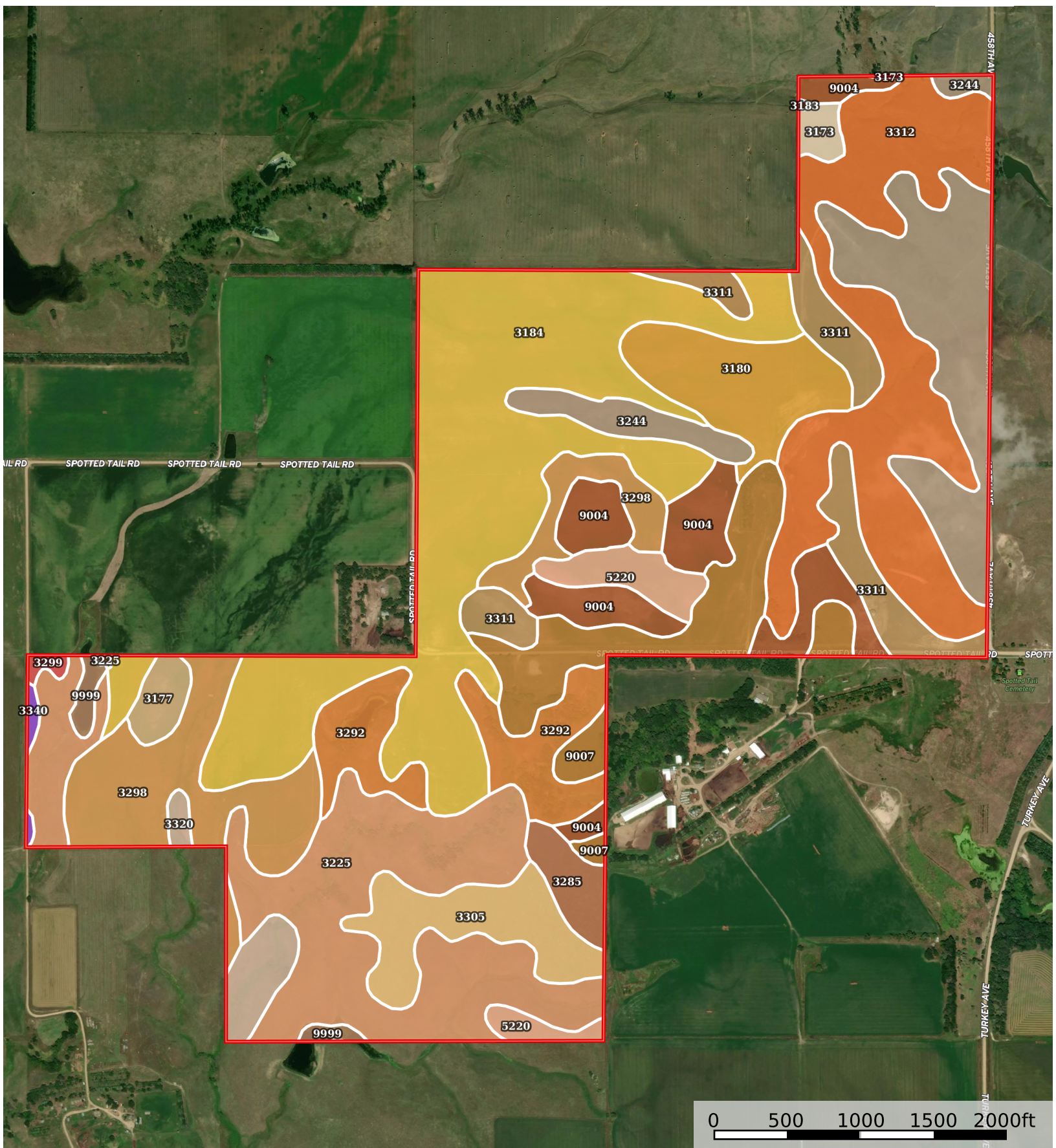


+/- 480 acres Keya Paha Co
Nebraska, AC +/-



 Boundary

|  Boundary 477.98 ac

SOIL CODE	SOIL DESCRIPTION	ACRES	%	CPI	NCCPI	CAP
3184	Jansen loam, 2 to 6 percent slopes	103.26	21.6	53	33	3e
3225	Labu-Sansarc silty clays, 9 to 35 percent slopes	64.41	13.47	33	19	6e
3312	Ronson-Anselmo fine sandy loams, 6 to 30 percent slopes	59.38	12.42	0	31	6e
3244	Meadin gravelly sandy loam, 2 to 30 percent slopes	42.55	8.9	0	21	6s
3298	Ree loam, 0 to 3 percent slopes	37.38	7.82	85	52	2c
9007	Anselmo fine sandy loam, 0 to 3 percent slopes	27.91	5.84	59	36	2e
9004	Anselmo fine sandy loam, 3 to 6 percent slopes	27.07	5.66	54	36	3e
3292	Paka-Mariaville loams, 11 to 30 percent slopes	22.41	4.69	0	26	6e
3311	Ronson-Anselmo fine sandy loams, 6 to 11 percent slopes	21.5	4.5	0	36	4e
3180	Jansen fine sandy loam, 0 to 2 percent slopes	20.04	4.19	0	34	2e
3305	Reliance silt loam, 2 to 6 percent slopes	17.98	3.76	86	53	3e
5220	Onita silt loam, 0 to 2 percent slopes	9.47	1.98	94	60	2c
3320	Sansarc silty clay, 9 to 35 percent slopes	7.41	1.55	0	13	7e
3285	Paka loam, 0 to 2 percent slopes	5.93	1.24	0	50	2c
3177	Holt variant fine sandy loam, 3 to 6 percent slopes	4.14	0.87	0	40	3e
9999	Water	2.71	0.57	0	-	-
3173	Holt-Longpine fine sandy loams, 6 to 11 percent slopes	2.49	0.52	0	23	4e
3340	Wewela fine sandy loam, 0 to 3 percent slopes	0.93	0.19	43	29	3e
3299	Ree loam, clayey substratum, 0 to 2 percent slopes	0.9	0.19	0	55	2c
3183	Jansen loam, 0 to 2 percent slopes	0.11	0.02	54	33	2s
TOTALS		477.98(*)	100%	34.24	32.52	4.09









(*) Total acres may differ in the second decimal compared to the sum of each acreage soil. This is due to a round error because we only show the acres of each soil with two decimal.

Capability Legend

Increased Limitations and Hazards

Decreased Adaptability and Freedom of Choice Users

Land, Capability

								
	1	2	3	4	5	6	7	8
'Wild Life'	•	•	•	•	•	•	•	•
Forestry	•	•	•	•	•	•	•	
Limited	•	•	•	•	•	•	•	
Moderate	•	•	•	•	•	•		
Intense	•	•	•	•	•			
Limited	•	•	•	•				
Moderate	•	•	•					
Intense	•	•						
Very Intense	•							

Grazing Cultivation

(c) climatic limitations (e) susceptibility to erosion

(s) soil limitations within the rooting zone (w) excess of water